



# **FILMFABRIEK SCANNERS SOFTWARE INSTALLATION**

Introduction.....	2
System Requirements.....	2
Installing the scanner’s control software .....	3
Setup the scanner .....	3
Removing previous versions of the software .....	3
Installing ActiveUSB and the camera driver .....	3
ActiveUSB .....	3
Camera driver.....	4
Installing Cine2Digits .....	5
Software registration.....	5
Additional step for the HDS scanner: Focusrite Soundcard .....	5
FF Transcode.....	5

## INTRODUCTION

This document describes the steps required to (re)install the necessary software for your scanner. Note that you will need Windows administrator rights for this to work.

## SYSTEM REQUIREMENTS

Scanning a film and handling heavy image files is quite an intensive task so we advise using a reasonably recent and powerful computer.

*Check our support webpage for up-to-date specifications.*

Windows 10 is currently the only supported operating system.

# INSTALLING THE SCANNER'S CONTROL SOFTWARE

The scanner is controlled by a software called **Cine2Digits** (C2D). This software controls the scanner and saves the digitized images and sounds on the computer. Cine2Digits uses another piece of software to retrieve the camera data, **ActiveUSB**, which must be installed first.

## SETUP THE SCANNER

Follow the instructions provided with your scanner to set it up correctly.  
Connect it to the computer and turn it on.

## REMOVING PREVIOUS VERSIONS OF THE SOFTWARE

If you have the software installed on the computer already and you wish to reinstall it or install a new version, follow these steps first:

- In the Windows Settings, go to the “Apps” page (you can get there quickly by typing “Add or remove programs” in the Windows Start menu).
- Find ActiveUSB in the list of installed apps, click on it and choose “Uninstall”. Follow the instructions and click “Yes” if a security message appears.
- Do the same for Cine2Digits.

You can of course only remove one or the other depending on what you want to update or reinstall.

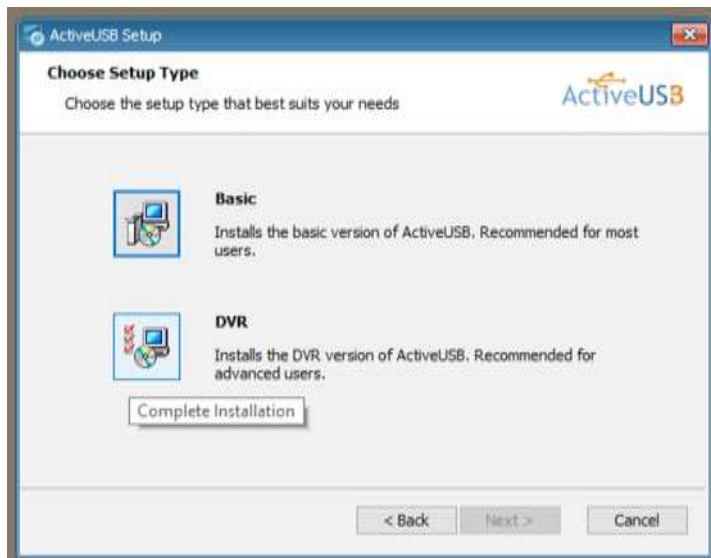
## INSTALLING ACTIVEUSB AND THE CAMERA DRIVER

### ActiveUSB

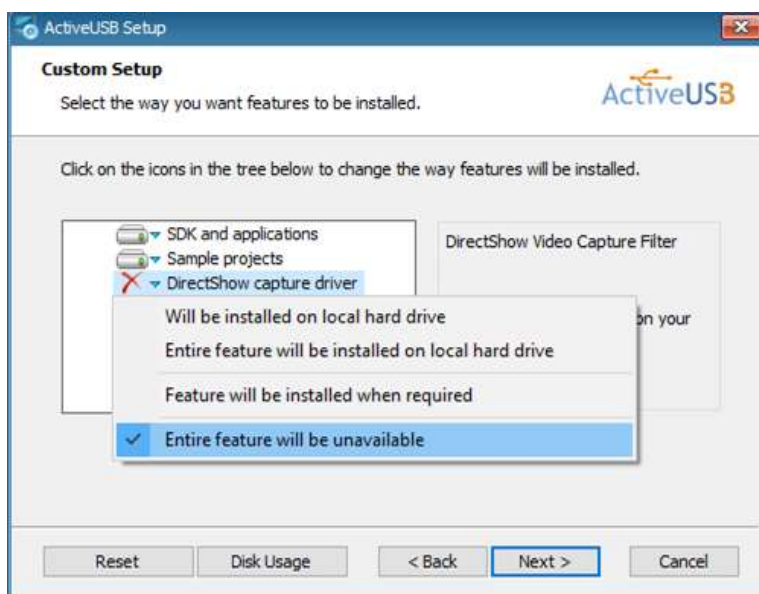
In the software package provided with your Filmfabriek scanner, you will find the ActiveUSB installer (do not use another version of ActiveUSB, it will not contain custom-made adaptations for the Filmfabriek scanners).

**During the installation of the software, the computer should be connected to the internet. Some essential elements may be downloaded during the installation procedure.**

Simply double-click on the executable (“ActiveUSBSetup\_*version*.exe”) and follow the instructions.  
**When offered a choice of installation mode, choose DVR:**



At the next step, some components have to be unselected. To prevent conflicts with other programs such as Google Chrome, Microsoft Teams or Skype which may try to access the camera from the Filmfabriek scanner and block the scanner software from using it, please unselect “DirectShow capture driver”. **Select ‘Entire feature will be unavailable’**:



## Camera driver

Once ActiveUSB is installed, open the Windows Start menu and go to the newly added ActiveUSB programs. Click on “Install Camera Driver”<sup>1</sup>. Make sure the scanner is plugged into the computer and turned on so that ActiveUSB can communicate with the camera.

A console window will appear and if all goes well it will say:

*“Installing USB3 Vision driver.  
Driver installed!”*

<sup>1</sup>If the scanner is not connected properly, an error will be reported.

## INSTALLING CINE2DIGITS

Simply run the Cine2Digits installer provided in the software package ("C2DversionSetup.msi"). Note that C2D needs ActiveUSB and the camera driver to work, so install them first.

## SOFTWARE REGISTRATION

In order to use Cine2Digits a valid ActiveUSB license is required.

There are two types of licenses: the **USB key license** and the **software registration license**.

**If you have a Filmfabriek USB key**, you don't need to do anything. Just plug it into a USB port of the computer you intend to use for scanning. You can move it from one computer to another, but only use it on one computer at a time.

**If you do not have a Filmfabriek USB key**, you need to register the software on the computer. This must be done when first installing the software, but it is also sometimes required again after a Windows update. A message saying your ActiveUSB trial period has expired will let you know this is the case.

For first-time installation, use our C2D registration tool ([C2DUSBv2reg.exe](#)) to show your computer's "Control ID". Write it down and send it to Filmfabriek, we will create a registration code for this PC. Once you have received it, run the registration tool again (right-click "Run as administrator") and enter your registration key.

Make sure to keep it somewhere in case you would need to register again. If you don't have it anymore, send us the Control ID so we can compute the key again.

## ADDITIONAL STEP FOR THE HDS SCANNER: FOCUSRITE SOUNDCARD

To record audio, the FocusRite soundcard is required.

Install the FocusRite driver available following this link, with the soundcard unplugged during installation:

[https://customer.focusrite.com/en/support/downloads?brand=Focusrite&product\\_by\\_type=1361&download\\_type=software](https://customer.focusrite.com/en/support/downloads?brand=Focusrite&product_by_type=1361&download_type=software)

Make sure you download the correct driver version (the generation of the card is written on the back). With the driver reinstalled, reboot the computer, and then plug the card again.

## FF TRANSCODE

FF Transcode is a program for easy post processing of the files produced by your Filmfabriek film scanner.

It allows you to convert ("transcode") your images, video, and sounds to different commonly used codecs and file formats.

The integrated audio synchronisation functionality also allows you to sync the soundtrack of a film on the images with a precision of a millisecond.

This is recommended for HDS users scanning sound films and it is required to process the sound files produced by the Pictor Pro.

Please refer to the dedicated guide for the installation of FF Transcode.